



# MEDIUM SECURITY ACCESS DOOR

Model DSB-123SD-MS

For All Types of Construction



**KARP ASSOCIATES, INC.**

54-54 43rd Street, Maspeth, NY 11378  
 (718) 784-2105 - Phone  
 (718) 784-9169 - Fax

DATE

**SPECIFICATIONS**

**GENERAL SCOPE:**

Access doors shall be Karp Type DSB-123SD-MS as manufactured by Karp Associates, Inc., Maspeth, N.Y. Sizes shall be as indicated on the drawings.

**CONSTRUCTION:**

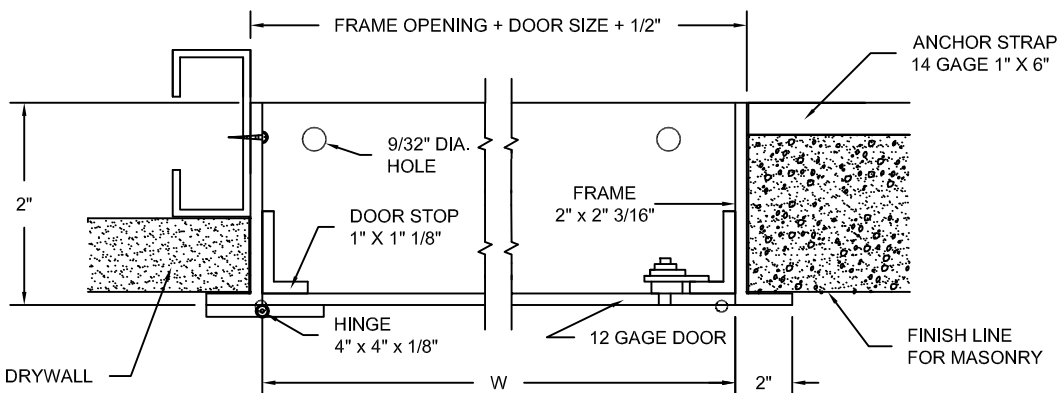
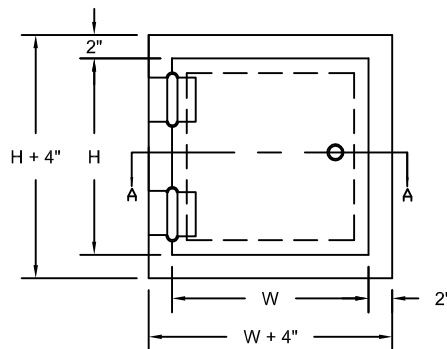
1. Frame shall be 3/16" x 2" x 2" angle welded with joints ground smooth.
2. Flange shall be 2" wide.
3. Door shall be 12 gage steel.
4. Hinges shall be heavy duty and welded to door and frame.
5. Locks shall be flush to finished surface of door and shall be spanner head (tamperproof). Key operated cylinder lock with automatic dust shutter is also available, or doors can be prepped to accommodate special locks (supplied by others).
6. Masonry anchor straps and 1/4" mounting holes are included on all frames.
7. Finish shall be prime coat of rust inhibitive electrostatic powder, baked grey enamel.

**STANDARD SIZES**

| DOOR SIZE<br>H X W (IN.) | WALL/CEILING<br>OPENING (IN.) | SHIP WT.<br>(LBS.) |
|--------------------------|-------------------------------|--------------------|
| 12 x 12                  | 12 1/2 x 12 1/2               | 24.0               |
| 16 x 16                  | 16 1/2 x 16 1/2               | 32.0               |
| 18 x 18                  | 18 1/2 x 18 1/2               | 36.0               |
| 24 x 24                  | 24 1/2 x 24 1/2               | 52.0               |
| 36 x 24                  | 36 1/2 x 24 1/2               | 68.0               |
| 36 x 36                  | 36 1/2 x 36 1/2               | 95.0               |

| PROJECT DATA          |  |  |  |  |  |
|-----------------------|--|--|--|--|--|
| Project Name:         |  |  |  |  |  |
| Architect:            |  |  |  |  |  |
| Contractor:           |  |  |  |  |  |
| Agent/Customer Name:  |  |  |  |  |  |
| Tagging Instructions: |  |  |  |  |  |
| Special Instructions: |  |  |  |  |  |

| PROJECT SCHEDULE |   |   |                |        |         |
|------------------|---|---|----------------|--------|---------|
| Qty.             | H | W | No. of Latches | Finish | Remarks |
|                  |   |   |                |        |         |
|                  |   |   |                |        |         |
|                  |   |   |                |        |         |
|                  |   |   |                |        |         |
|                  |   |   |                |        |         |
|                  |   |   |                |        |         |
|                  |   |   |                |        |         |



Made with Union Labor