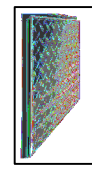




**FLOOR ACCESS PANEL**  
**Model KAF A**  
 Flush Diamond Plate  
 For All Types of Construction



**KARP ASSOCIATES, INC.**  
 54-54 43rd Street, Maspeth, NY 11378  
 (718) 784-2105 - Phone  
 (718) 784-9169 - Fax

DATE \_\_\_\_\_

**SPECIFICATIONS**

**GENERAL SCOPE:**

Access doors shall be Karp Type KAF A as manufactured by Karp Associates, Inc., Maspeth, N.Y. Sizes shall be as indicated on the drawings.

**CONSTRUCTION:**

1. Panels shall be 1/4" 6061-T661 aluminum with the following options: recessed 1/8" flush smooth plate, flush-diamond plate.
2. Frame shall be 6063-T9 extruded aluminum with the cast corner connectors and shall be installed with rubber cork strip seal.
3. Panel shall be secured with 10-24 x 3/4 stainless steel FHMS screws.

**STANDARD SIZES**

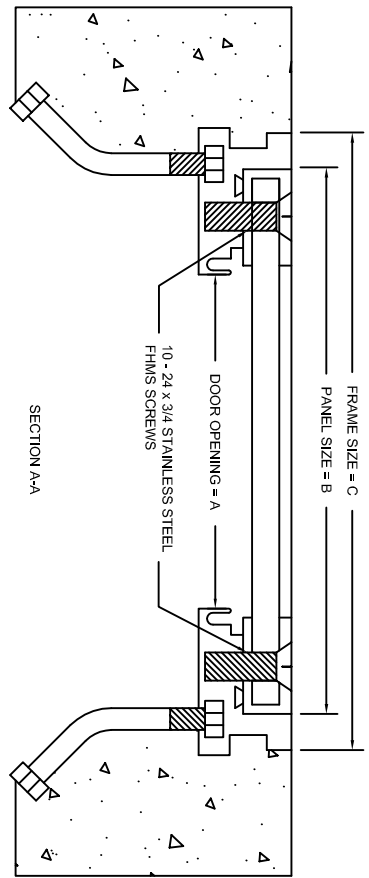
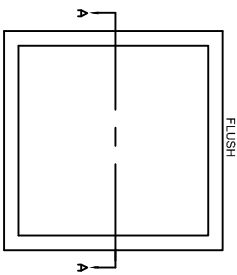
A DOOR SIZE H X W (IN.)	B PANEL SIZE (IN.)	C FRAME SIZE H X W (IN.)	SHIP WT. (LBS.)
12 x 12	13 1/2 x 13 1/2	14 x 14	11.0
18 x 18	16 1/2 x 19 1/2	20 x 20	19.0
24 x 24	25 1/2 x 29 1/2	26 x 26	29.0
30 x 30	31 1/2 x 31 1/2	32 x 32	53.0
36 x 36	37 1/2 x 37 1/2	38 x 38	75.0

**PROJECT DATA**

Project Name: \_\_\_\_\_  
 Architect: \_\_\_\_\_  
 Contractor: \_\_\_\_\_  
 Agent/Customer Name: \_\_\_\_\_  
 Tagging Instructions: \_\_\_\_\_  
 Special Instructions: \_\_\_\_\_

**PROJECT SCHEDULE**

Qty.	H	W	Finish	Remarks



Made with Union Labor