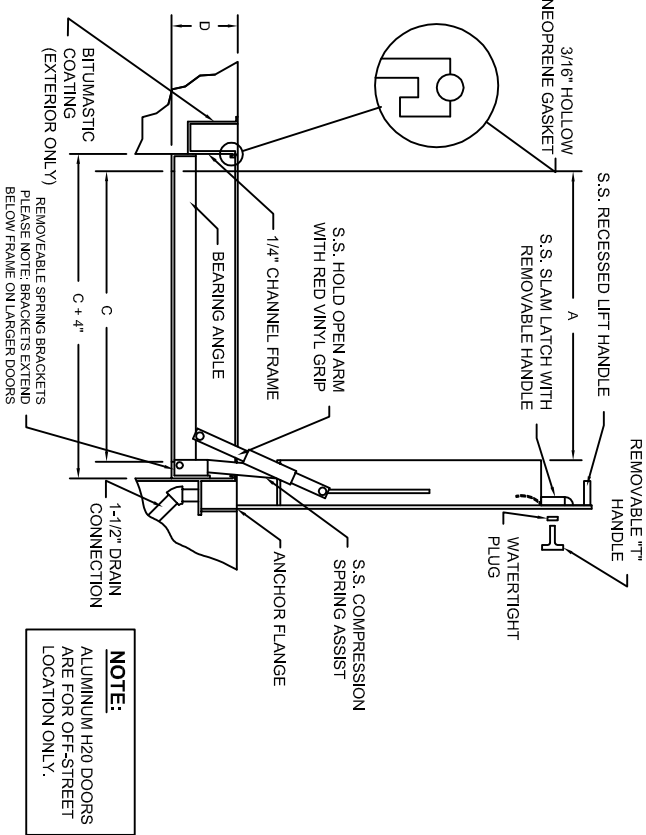


MODEL	"A"	"B"	"C"	"D"	WT.
FD2424AHWS	24"	24"	24"	5.5"	45 lb
FD2430AHWS	24"	30"	24"	5.5"	50 lb
FD2436AHWS	24"	36"	24"	5.5"	55 lb
FD2442AHWS	24"	42"	24"	5.5"	60 lb
FD3030AHWS	30"	30"	31"	6.5"	55 lb
FD3036AHWS	30"	36"	31"	6.5"	60 lb
FD3048AHWS	30"	48"	31"	6.5"	70 lb
FD3636AHWS	36"	36"	37"	6.5"	70 lb
FD3648AHWS	36"	48"	37"	6.5"	85 lb
FD3654AHWS	36"	54"	37"	6.5"	115 lb
FD4242AHWS	42"	42"	44"	7.5"	95 lb



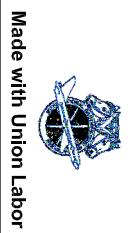
NOTE:
ALUMINUM H20 DOORS
ARE FOR OFF-STREET
LOCATION ONLY.

SPECIFICATIONS:
Access door shall be a water-tight door as manufactured by Karp Associates, Inc., Maspeth, NY. Door lid shall be fabricated with 3/16" aluminum diamond plate designed to support a 300 lb./sq. live load. Door shall be finished with a 316 stainless steel exterior and 304 stainless steel interior. Channel-type frame with a 1/8" neoprene gasket, continuous anchor flange and 1-1/2" shaft coupling welded to the underside. Door shall open 90 degrees and automatically lock in that position with a stainless steel hold open arm with a red vinyl grip. Door lid shall be equipped with a recessed lift handle. Hinges shall be all stainless steel and attached with tamperproof fasteners. All hardware shall be grade 316 stainless steel. Doors shall have a mill finish with a bitumastic coating applied to the exterior of the frame to prevent hydrolysis with concrete. Doors shall be equipped with a stainless steel spring assist which shall provide a smooth and controlled operation when opening and closing door. Operation will not be affected by temperature. Door shall be furnished with a stainless steel slam lock with cover plug and removable handle. Door shall be furnished with a peel-off protective cover to protect finish from concrete splatter. Underside of lid shall have visibility tape applied for safety. Manufacturer shall guarantee material and workmanship for a period of ten years.

OPTIONS: Splicing to depth of slab, fiberglass insulation, safety chains & ports.
LOCK OPTIONS: staple for padlock, recessed hasp, keyed deadbolt lock, pertained lock.

"X " Aluminum, H20
Loading without impact
Watertight Door

Karp Associates, Inc.
54-54 43rd St.
Maspeth, NY 11378
TEL: 1-718-784-2105



Made with Union Labor