



NON-INSULATED FIRE RATED ACCESS DOOR WITH DRYWALL BEAD

Model KRP-450FR

For Walls Only



KARP ASSOCIATES, INC.
54-54 43rd Street, Maspeth, NY 11378
(718) 784-2105 - Phone
(718) 784-9169 - Fax

DATE

SPECIFICATIONS

GENERAL SCOPE:

Classified access frame and fire door assembly 1 1/2 hour
"B" Label Underwriters Laboratories File # A-10806.
Warnock Hersey File # U51466.

CONSTRUCTION:

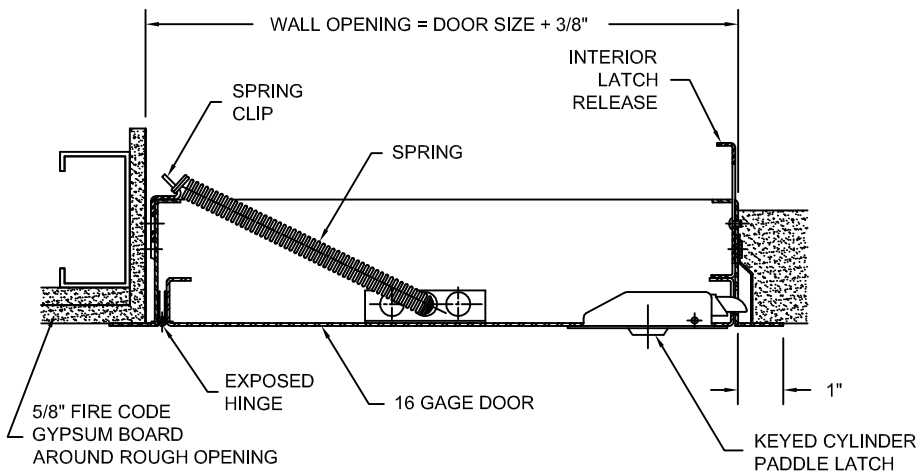
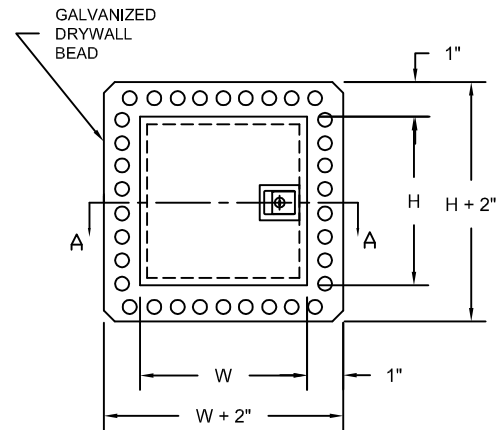
1. Frame shall be 16 gage steel, 1" wide, surrounded by galvanized drywall bead.
2. Door shall be 16 gage steel, and shall open to 175°, be self-latching with automatic closer and interior latch release.
3. Hinge shall be continuous piano hinge.
4. Latches shall be spring loaded sliding bolt type, keyed paddle latch, all keyed alike. Door can be prepared for a rim cylinder lock.
5. Finish shall be prime coat of rust inhibitive electrostatic powder, baked grey enamel. Stainless steel doors shall have #4 satin finish.

STANDARD SIZES

DOOR SIZE H X W (IN.)	WALL/CEILING OPENING (IN.)	NUMBER OF LATCHES	SHIP WT. (LBS.)
8 x 8	8 3/8 x 8 3/8	1	4.3
12 x 12	12 3/8 x 12 3/8	1	7.2
14 x 14	14 3/8 x 14 3/8	1	8.3
16 x 16	16 3/8 x 16 3/8	1	9.9
18 x 18	18 3/8 x 18 3/8	1	11.7
24 x 24	24 3/8 x 24 3/8	1	17.4
30 x 22	30 3/8 x 22 3/8	1	19.1
30 x 30	30 3/8 x 30 3/8	1	23.9
36 x 24	36 3/8 x 24 3/8	2	24.1
36 x 36	36 3/8 x 36 3/8	2	33.5

PROJECT DATA					
Project Name:					
Architect:					
Contractor:					
Agent/Customer Name:					
Tagging Instructions:					
Special Instructions:					

PROJECT SCHEDULE					
Qty.	H	W	No. of Latches	Finish	Remarks



SECTION A-A



Made with Union Labor