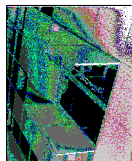




CEILING ACCESS HATCHES
Model KSTE/CAD (Exposed Grid)
For Use in Square or Beveled Edge Ceiling Tile

DATE _____



KARP ASSOCIATES, INC.
 54-54 43rd Street, Maspeth, NY 11378
 (718) 784-2105 - Phone
 (718) 784-9169 - Fax

SPECIFICATIONS

GENERAL SCOPE:

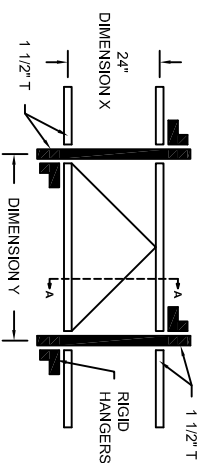
Access doors shall be Karp "Type KSTE/CAD as manufactured by Karp Associates, Inc., Maspeth, N.Y. Sizes shall be as indicated on the drawings.

CONSTRUCTION:

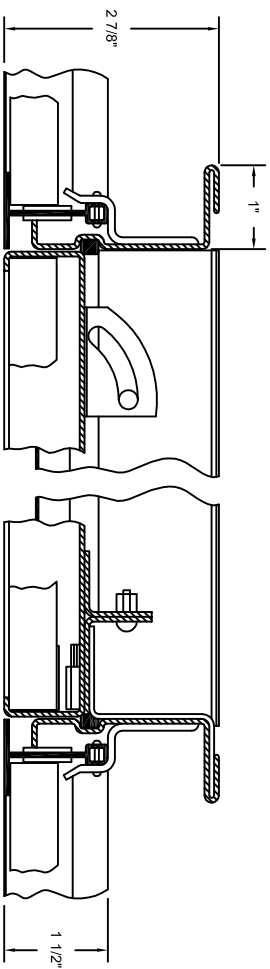
1. Frame shall be 20 gage hot dipped galvanized steel.
2. Door shall be 20 gage electro-galvanized steel with 7/32" flange stove enameled white.
3. Escutcheon caps shall be plastic molded with hinged flaps.
4. Locks shall be budget locks operated with square shanked key.

STANDARD SIZES (Special Sizes On Request)

DOOR SIZE (IN.)	SHIP WT. (LBS.)
X Y	19.0
24 x 24	35.0
24 x 48	

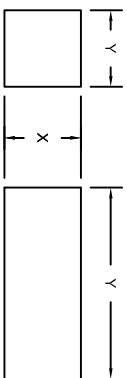


PANEL SUPPORT ILLUSTRATION



SECTION A-A
 SCALE 1:2

PROJECT DATA					
Project Name:					
Architect:					
Contractor:					
Agent/Customer Name:					
Tagging Instructions:					
Special Instructions:					
PROJECT SCHEDULE					
Qty.	H	W	No. of Latches	Finish	Remarks



OPENING SYSTEMS



Made with Union Labor