



SURFACE MOUNTED FLUSH ACCESS DOOR

Model DSB-214SM

For All Types of Construction

DATE



KARP ASSOCIATES, INC.
 260 Spagnoli Road, Melville, NY 11747
 (631)768-8300 - Phone
 (631)768-8350 - Fax

PROJECT DATA

Project Name:
Architect:
Contractor:
Agent/Customer Name:
Tagging Instructions:
Special Instructions:

PROJECT SCHEDULE

Qty.	H	W	No. of Latches	Finish	Remarks

SPECIFICATIONS

GENERAL SCOPE:

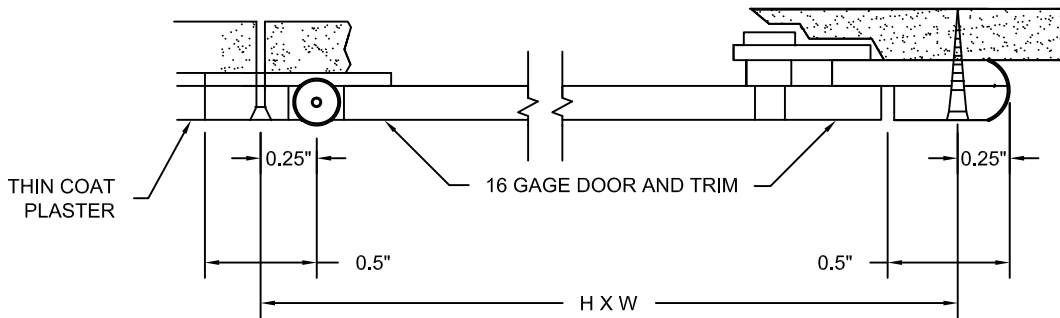
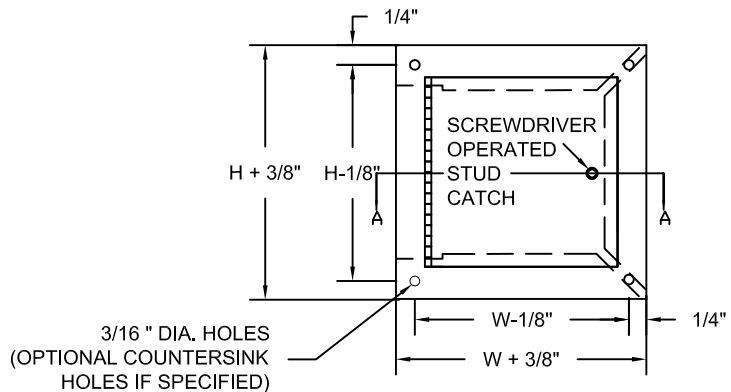
Access doors shall be Karp Type DSB-214SM as manufactured by Karp Associates, Inc., Melville, N.Y. Sizes shall be as indicated on the drawings.

CONSTRUCTION:

- (a) On door sizes of 12 x 12 and smaller, door and frame shall be 16 gage steel (or if specified, stainless steel).
- (b) On larger sizes, door and frame shall be 14 gage steel (or if specified, stainless steel).
- Trim shall be one piece construction.
- Hinge shall be exposed continuous piano hinge.
- Latches shall be flush and screwdriver operated, or shall be key operated cylinder lock with automatic dust shutter.
- Finish shall be prime coat of rust inhibitive electrostatic powder, baked white enamel.

STANDARD SIZES

FRAME MTG SIZE H X W (IN.)	NUMBER OF LATCHES	SHIP WT. (LBS.)
8 x 8	1	1.8
12 x 12	1	4.2
16 x 16	2	7.0
24 x 24	4	13.7



Made with Union Labor